



LIFEWAVE

ENROLLMENT PACKS

2024 New Pack Structure

Effective September 30, 2024

WHY CHANGE THE ENROLLMENT PACKS?

- To address regulatory concerns
 - Rank Titles need to be de-coupled from Enrollment Pack purchases
 - Sponsoring bonuses should be paid to the Personal Sponsor only for ALL packs
 - Lower PIB amounts reduce motivation of pure recruitment by shifting the focus to onboarding and retention
- To streamline the sign-up process
 - A 3-tier structure is easier to share — Good, Better, Best
 - The most popular three packs purchased were selected
 - The 3-pack model is already reflected in the LifeWave InTouch App
 - Higher BV amounts assist lower-ranking BPs with cycling in binary
- To encourage Premium Packs purchases
 - Provides the best discount available for the new Brand Partner
 - Offers the highest BV to price ratio overall
 - Encourages “skin in the game” mindset because of investment

KEY CHANGES

Reduction in Packs

- Removal of Bronze and Platinum Packs
- New Pack names

Product Introduction Bonus (PIB)

- The PIB will be paid on the Core, Advanced, and Premium enrollment packs fully to the sponsor (enrolling BP only)
- **Reminder:** Brand Partner needs to be compensation-plan active (55 PV in rolling 31-days) to receive PIB Bonus

Bonus Updates

- Diamond and Platinum Fast Start Bonuses will be removed
- Cycle Bonus — A Brand Partner will need one (1) personally sponsored active BP* on each leg.
- Third Level Matching Bonus Qualified — Will require three (3) personally sponsored active BPs*

Rank Requirement Updates

- Manager/Director Rank Qualification will require a lifetime PV of 300
- Or for existing Gold and above pack purchases, the pack will continue to meet the rank requirement
- Also Manager/Director Rank Qualifications will no longer require Silver Legs. Instead, active BP* counts are required on each leg — two (2) for Manager, three (3) for Director

* 55 PV in rolling 31-days

DISCONTINUED PACKS

**Discontinue
Bronze Pack**

**Discontinue
Platinum Pack**

Bronze Customers will keep their Bronze Pack rank. To qualify as Manager, they will have to meet the new rank qualifications (lifetime PV of 300, rolling 110 PV and two personally sponsored active BPs on both right and left legs).

Platinum Customers will keep their Platinum Pack rank. They will not be able to upgrade any further since a Platinum Pack is considered the highest level of the new pack structure (Premium).

NEW PACK STRUCTURE

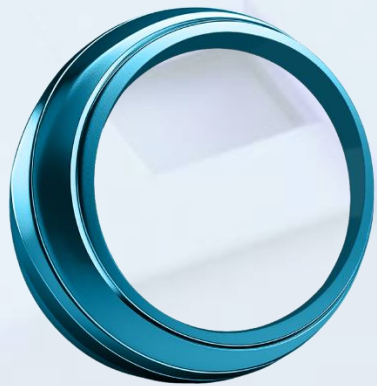
Starter Pack

Core Pack (Current Silver)

Advanced Pack (Current Gold)

Premium Pack (Current Diamond)

STARTER



STARTER

Starter			
Price	No. of Sleeves	BV	PIB
\$25	0	none	none

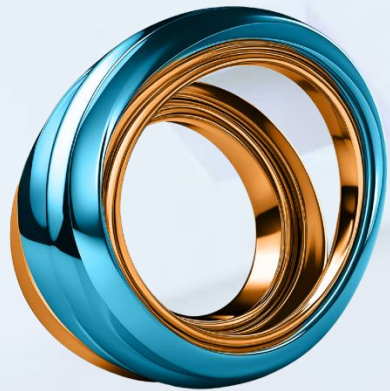
CORE PACK



C O R E

Silver (Current)				Core (New)			
Price	No. of Sleeves	BV	PIB	Price	No. of Sleeves	BV	PIB
\$299.95	3 OR 6	165	\$50	\$295.00	3 OR 6	180	\$35

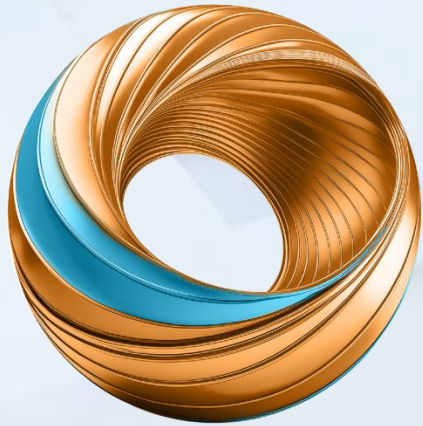
ADVANCED PACK



ADVANCED

Gold (Current)				Advanced (New)			
Price	No. of Sleeves	BV	PIB	Price	No. of Sleeves	BV	PIB
\$499.95	5/1 OR 11	275	\$100	\$535.00	6 OR 12	300	\$75

PREMIUM PACK



P R E M I U M

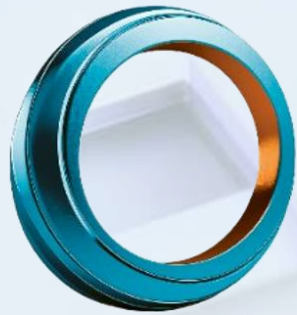
Diamond (Current)				Premium (New)			
Price	No. of Sleeves	BV	PIB	Price	No. of Sleeves	BV	PIB*
\$1,599.95	19/1 OR 39	610	\$500	\$1,750.00	20 OR 40	745	\$405

Trickle order logic will still be in place for the Premium Pack, meaning, a portion of the volume applies to the month of purchase (525 BV) and then two additional months of 110 PV each for a total of 745.

**Note: Full PIB Bonus amount is paid to the sponsor (enrolling BP only)*

ENROLLMENT KITS

Enrollment Kits - Product Sleeves



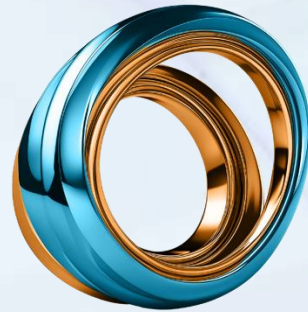
C O R E

Receive the following products in a **CORE ENROLLMENT**:

3 SLEEVES* OF
LIFEWAVE X39®
or X49®

OR

6 SLEEVES*
OF ANY
OTHER PATCH



A D V A N C E D

Receive the following products in an **ADVANCED ENROLLMENT**:

6 SLEEVES* OF
LIFEWAVE
X39 or X49

OR

12 SLEEVES*
OF ANY OTHER
PATCH



P R E M I U M

Receive the following products in a **PREMIUM ENROLLMENT**:

20 SLEEVES* OF
LIFEWAVE
X39 or X49

OR

40 SLEEVES*
OF ANY
OTHER
PATCH

* 3 Sleeves LifeWave X39 or X49 or 6 sleeves of any other patch.

NEW RANK QUALIFICATIONS

Managers

- Must have a valid Status - Active
- Must have purchased a Gold Pack or upgrade **OR Lifetime PV of 300**
- 110 Rolling PV (31 Days)
- 2 personally sponsored **active Brand Partners*** in your left leg
- 2 personally sponsored **active Brand Partners*** in your right leg

*55 PV in rolling 31-days

NEW RANK QUALIFICATIONS

Director

- Must have a valid Status - Active
- Must have purchased a Gold Pack or upgrade **OR Lifetime PV of 300**
- 110 Rolling PV (31 Days)
- 3 personally sponsored **active Brand Partners*** in your left leg
- 3 personally sponsored **active Brand Partners*** in your right leg
- 1 personally sponsored Manager left leg
- 1 personally sponsored Manager right leg

*55 PV in rolling 31-days



LIFEWAVE

THANK YOU